



Southland Symphony Orchestra 2015-16 "A Magical Season"

December 6 - Holiday Magic

January 24 - Opera Magic

March 6 - Mozart Masterpieces

April 17 - Season Finale: Music & Magic

All concerts will be presented at Bethel Congregational UCC,
536 N. Euclid Ave, Ontario 91762.

Support the symphony with a concert program ad.

- Prices below are pro-rated for the remainder 3 concerts of the season. Your ad will also be featured year-round on our website [www.southlandsymphony.com/Visit Our Advertisers](http://www.southlandsymphony.com/VisitOurAdvertisers).
- Ad sizes are based on our standard concert program - (1/2 size legal plus margins) are as shown in the examples on the facing page. The outside back cover is currently sold out for 2015-16 Season.
- Purchasing your ad now will guarantee you this low yearly rate next year
- Ad specifications are: 300 dpi, any graphic format or Photoshop.
- Email to: sgunn@southlandsymphony.com. If you do not currently have an ad, we can design one for you. We will scan your business card, but prefer electronic format.

| Size | Full Season | Ad Specifications |
|---------------|-------------|-------------------|
| Business Card | \$70 | 3.25" x 2" |
| Quarter page | \$120 | 3.25" x 4" |
| Half page | \$220 | 6.25" x 4" |
| Full page | \$385 | 6.5" x 8" |
| Inside cover | \$485 | 6.5" x 8" |

◀ 1/4 page ▶
3.25m" x 2"



Business card
(example above)

3.25" x 2"

(see all ads on our website: www.SouthlandSymphony.com)

◀ 1/2 page ▶
6.25" x 4"

◀ full page ▶
6.5" x 8"

The Southland Symphony Orchestra thanks
Bethel United Church of Christ
for hosting their concerts.

*Bethel invites you to attend
Sunday Worship ~ 10:00 am.*

www.BethelUCCOntario.org

Dr. Sylvia Lee Mann
Pastor & Minister of Music

God is still speaking,
**UNITED CHURCH
OF CHRIST**



J. Brown
Violin Maker

*Award Winning Maker of
Violins, Violas, Cellos, Basses*

*Featuring Bows, Repairs,
Restorations, Bow Re-hairs,
Professionally setup and maintained
Rentals, Accessories, Music, Teacher
Referrals, Gifts and Novelties*

Financing Available

*Serving the San Gabriel Valley, Los Angeles
and the Inland Empire for 12 years.*

232 1/2 N. Indian Hill Blvd.
Claremont CA 91711
909-624-0849

Website: www.jbviolin.com
Email: jbviolin@dslextreme.com



Let us dance for a spell in the moonlight...

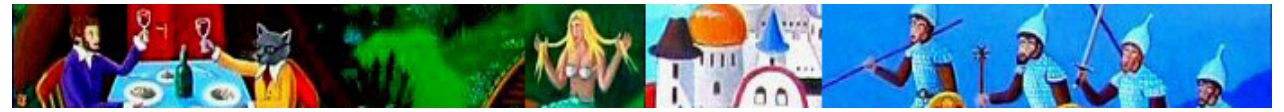
*Fabulous Pheromones ~ make friends,
feel better, spice up your life!*

www.AlmostSkyclad.com

Give us a try!!!

Almost Skyclad will be a vendor at
Bethel's Furry Friends Fundraiser
Saturday, October 25, 5 pm.

for more info: 909-447-9699 or visit
www.AlmostSkyclad.com



Southland Symphony Orchestra

Dr. Sylvia Lee Mann, Music Director & Conductor



fantastic
tales



with special guest violinist,
Elizabeth O'Bannon

SUNDAY,
SEPTEMBER 21, 2014
4:00 PM

Bethel United Church of Christ, 536 N. Euclid Ave, Ontario, CA 91762



Southland Symphony Orchestra is a non-profit organization.
All donations are tax-deductible.

(909) 235-9776 ~ <http://southlandssymphony.com>

Redlands Community Orchestra
James E. Benanti, Music Director

2014-2015 concert season
3:00 PM | Redlands High School, Clark Auditorium
840 E. Citrus Ave, Redlands CA 92374

Nov 9 | Mar 8 | May 17

RedlandsCommunityOrchestra.org
Sponsored by the Redlands High School Instrumental Music Department

Local. Musical. Free.