

Viola da gamba I

Brandenburg Concerto No. 6 in B-flat Major

BWV 1051

J. S. Bach



5



9



12



16



20



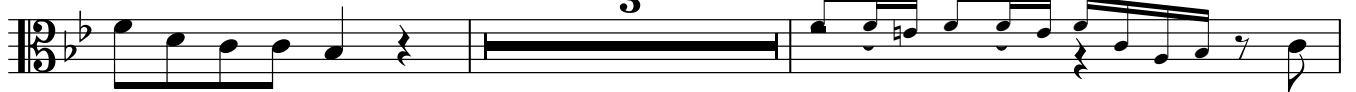
22



24



28



33



36



39



43



45



48



52



55



58



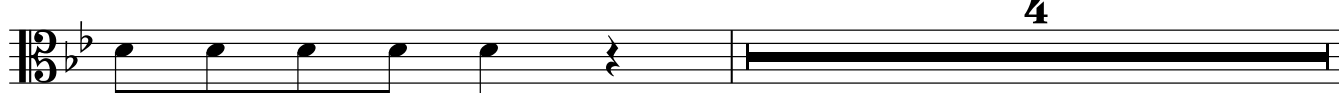
61



64



67



72 *Vla. I*

76

80 **2** *Vc.*

84 *p*

86 *f*

90

93

96

99

102

105



107



111



116



119



123



127



63 *Vla. I*

Measures 63 and 64 of the Viola da gamba I part. Measure 63 contains a complex sixteenth-note figure. Measure 64 continues with a similar rhythmic pattern, featuring eighth and sixteenth notes.

65

Measures 65 and 66. Measure 65 features a sequence of eighth notes with rests. Measure 66 continues with eighth notes and includes a slur over the final two notes.

68

Measures 68 and 69. Measure 68 consists of eighth notes with rests. Measure 69 features a slur over a group of notes, followed by eighth notes with rests.

71

Measures 71 and 72. Measure 71 contains a series of eighth notes. Measure 72 features eighth notes with rests and a slur over the final notes.

74 *Vla. I*

Measures 74 and 75. Measure 74 is a whole rest with a '3' above it, indicating a triplet. Measure 75 begins with *Vla. I* and contains a series of eighth notes with a slur.

78

Measures 78 and 79. Measure 78 consists of eighth notes with rests. Measure 79 features eighth notes with rests and a slur over the final notes.

81 *Vla. II*

Measures 81 and 82. Measure 81 is a whole rest with a '2' above it, indicating a pair. Measure 82 begins with *Vla. II* and contains a series of eighth notes with a slur.

86

Measures 86 and 87. Measure 86 features eighth notes with rests. Measure 87 contains eighth notes with rests and a slur over the final notes.

89

Measures 89 and 90. Measure 89 consists of eighth notes with rests. Measure 90 features eighth notes with rests and a slur over the final notes.

93

Measures 93 and 94. Measure 93 contains eighth notes with rests. Measure 94 features eighth notes with rests.

96



100



104



107



109

